



Cordless Trimmer RT001G 6 mm (1/4"), 8 mm (3/8")



XGT
40V Li-ion
max

High Speed trimming **35%*** UP



***Compared to predecessor model**

Cut a 1m long groove in Melapi at a depth of 6mm using ø6mm straight bit.





BL MOTOR

BL motor delivers the power and performance for corded demands

Push button switch

Lock/unlock button
 On/off switch button

Variable speed control

by dial

High durability and accuracy obtained

by using aluminum for body housing

Shaft lock

Flat-top design and provides stability for easier bit change.



Twin LED job lights

illuminate cutting edge and increase visibility



Collet size

Accepts 6mm & 8mm collets, 1/4" collet.



Soft start

minimizes start-up shock and makes the tool start smoothly

with Trimmer base

Round base for smooth and fast cutting with easy handling



Non-slip elastomer-covered body grip for increased operator comfort.

Precision cutting depth adjustment



Simple and efficient base lock system

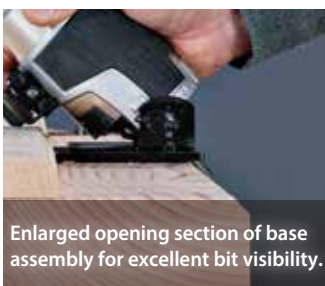
High durability and accuracy obtained by using aluminum for trimmer base

Replaceable, non-marring plastic base plate for protection of trimmer base and smooth sliding on work surface



with Tilt base (option)

Ergonomic body grip easy-to-grasp with one hand
 Tilting capacity: -30° to 45°



Enlarged opening section of base assembly for excellent bit visibility.

Non-slip elastomer-covered body grip for increased operator comfort.

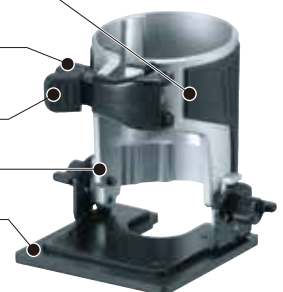
Precision cutting depth adjustment



Simple and efficient base lock system

High durability and accuracy obtained by using aluminum for base holder

Replaceable, non-marring plastic base plate for protection of plunge base and smooth sliding on work surface





Auto-start Wireless System

connects to compatible vacuum cleaner with Bluetooth.
The vacuum cleaner automatically runs while the switch is on.



Wireless unit
is compatible with all supported tools



Switch on the tool

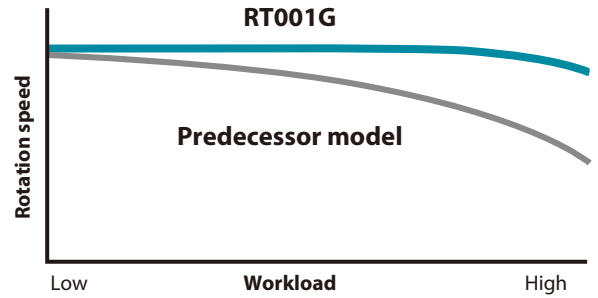


Vacuum cleaner is activated



Constant speed control

minimizes the reduction in bit speed to provide stable trimming.



Easy-to-Customize



Electric brake (Soft-brake)

The gentle stop of the product reduces the damage to the work material due to the reaction of the stop.



eXtreme Protection Technology

with Plunge base (option)

Precision cutting depth adjustment
Plunge capacity: 0 - 35mm (0 - 1-3/8")



Ergonomically contoured knob style handles



Optional Fine adjusting straight guide can be used.

Easy-to-operate lock lever



Rubberized soft grip

3 stage cut depth adjustment

High durability and accuracy obtained by using aluminum for plunge base

Replaceable, non-marring plastic base plate for protection of plunge base and smooth sliding on work surface



with Offset base (option)

Stable trimming is possible with a bit set in offset position.
Able to cut close to a wall or corner-18.5mm at closest

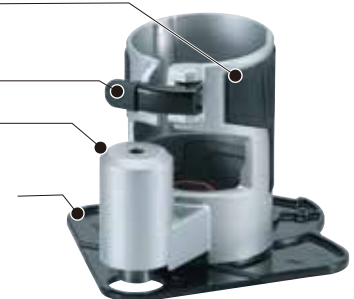


Non-slip elastomer-covered body grip for increased operator comfort.

Simple and efficient base lock system

High durability and accuracy obtained by using aluminum for offset base

Replaceable, non-marring plastic base plate for protection of trimmer base and smooth sliding on work surface



Accessories

Easy-to-Customize

Trimmer base assembly with Square base plate

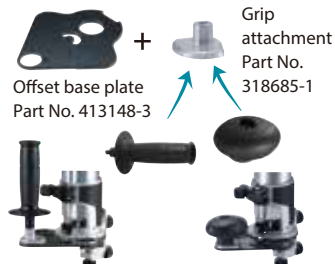


Dust nozzle
Part No. 195559-1

Tilt base plate
Part No. 413150-6

Convenient for cutting workpiece using guide rule, auxiliary wood fence

Offset base plate with Grip attachment & Grip



Offset base plate
Part No. 413148-3

Grip attachment
Part No. 318685-1

Convenient for cutting wide workpiece

Plunge base assembly with Side grip



Grip
Part No. 153489-2

Convenient for cutting while holding weight on one of the two handles of the base

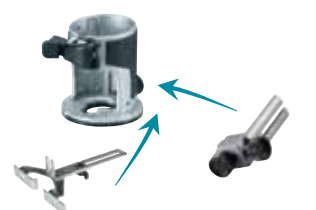
Trimmer base with Grip attachment set



Grip attachment set
Part No. 196924-7

Convenient for trimming while holding two handles of the Trimmer base

Trimmer base assembly with Straight guide & Trimmer guide assembly

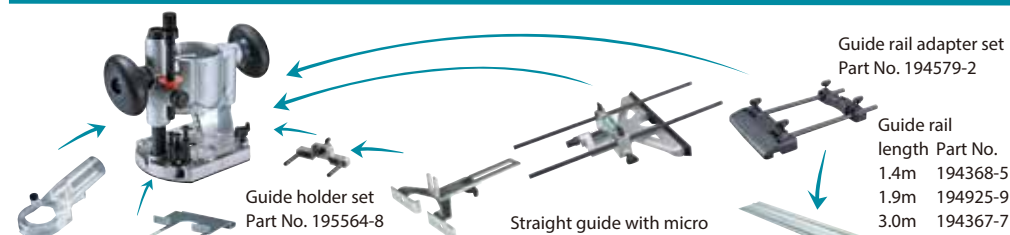


Straight guide
Part No. 122965-7

Trimmer guide assembly
Part No. 122703-7



Plunge base assembly with Dust nozzle, Straight guide, Guide rail adapter set, Guide rail & Clamp set



Dust nozzle
Part No. 194733-8

Straight guide
Part No. 164834-6

Straight guide
Part No. 122965-7

Straight guide with micro adjustment (Alumi w/o mark of origin)
Part No. 195136-9

Guide rail adapter set
Part No. 194579-2

Guide rail length
Part No.
1.4m 194368-5
1.9m 194925-9
3.0m 194367-7

Clamp set
Part No. 194385-5
199826-6*

* Quick type



(with auxiliary wood)

Templet guide

for Plunge base



for Trimmer base



for Trimmer base

A(mm)	B(mm)	C(mm)	Part No.
8	10	9.5	343577-5

for Plunge base

A(mm)	B(mm)	C(mm)	Part No.
7.7	9.5	11.5	164379-4
9	11	13	164775-6
10	12	9	164388-3
11	12.7	13	164776-4
14	17	20	165366-6
14.5	16	13	193043-0
18	20	13	164393-0
22	24	13	165364-0
24	27	13	164470-8
25	29	15	163080-8
27	30	13	164471-6
37	40	13	165046-4
37	40	13	164472-4

Base plate

Trimmer base plate



Part No. 454842-8

Plunge base plate



Part No. 450819-1

Tilt base plate



Part No. 413150-6

Offset base plate



Part No. 413148-3

Collet cone



Size	Part No.
8mm	763618-5
6mm	763636-3
1/4"	763637-1

Charging Time

Battery	Fast Charging	
	DC40RA	DC40RC
*1 BL4020 2.0Ah	22 min	30 min
*1 BL4025 2.5Ah	28 min	38 min
*1 BL4040 4.0Ah	45 min	67 min

*1 Recommended battery

Cordless Trimmer

RT01G 6 mm (1/4"), 8 mm (3/8")

- Variable Speed
- Brake
- Constant Speed
- Soft Start
- Dust Collection
- Built-in Job Light
- Carrying Case

Collet Size	6/8 mm (1/4/ 3/8")
No Load Speed (RPM)	110,000 - 31,000
Plunge Capacity	w/ Trimmer Base: 0 - 40 mm (0 - 1-9/16") w/ Plunge Base: 0 - 35 mm (0 - 1-3/8")
Vibration Level	Rotation without Load: 2.5 m/s ² or less
Sound Pressure Level	81 dB(A)
Sound Power Level	92 dB(A)
Dimensions (L x W x H)	w/ BL4020 / BL4025: 126 x 89 x 245 mm (5 x 3-1/2 x 9-5/8") w/ BL4040: 141 x 89 x 251 mm (5-9/16 x 3-1/2 x 9-7/8")
Net weight	2.2 - 2.5 kg (4.9 - 5.5 lbs.)

Standard Equipment : Collet Cone, Trimmer Base Assembly, Straight Guide, Wrench, Dust nozzle, Battery, Charger
Country-specific: Templet Guide, Trimmer Guide, Tilt Base Assembly, Offset Base Assembly, Plunge Base Assembly, Grip attachment, Side grip, Straight bit

The weight may differ depending on the attachment(s), including the battery cartridge. The lightest and heaviest combination, according to EPTA-Procedure 01/2014, are shown in the table. Items of standard equipment and specifications may vary by country or area.

Makita Corporation

3-11-8 Sumiyoshi-cho, Anjo, Aichi, 446-8502 Japan

PRINTED IN JAPAN 202203