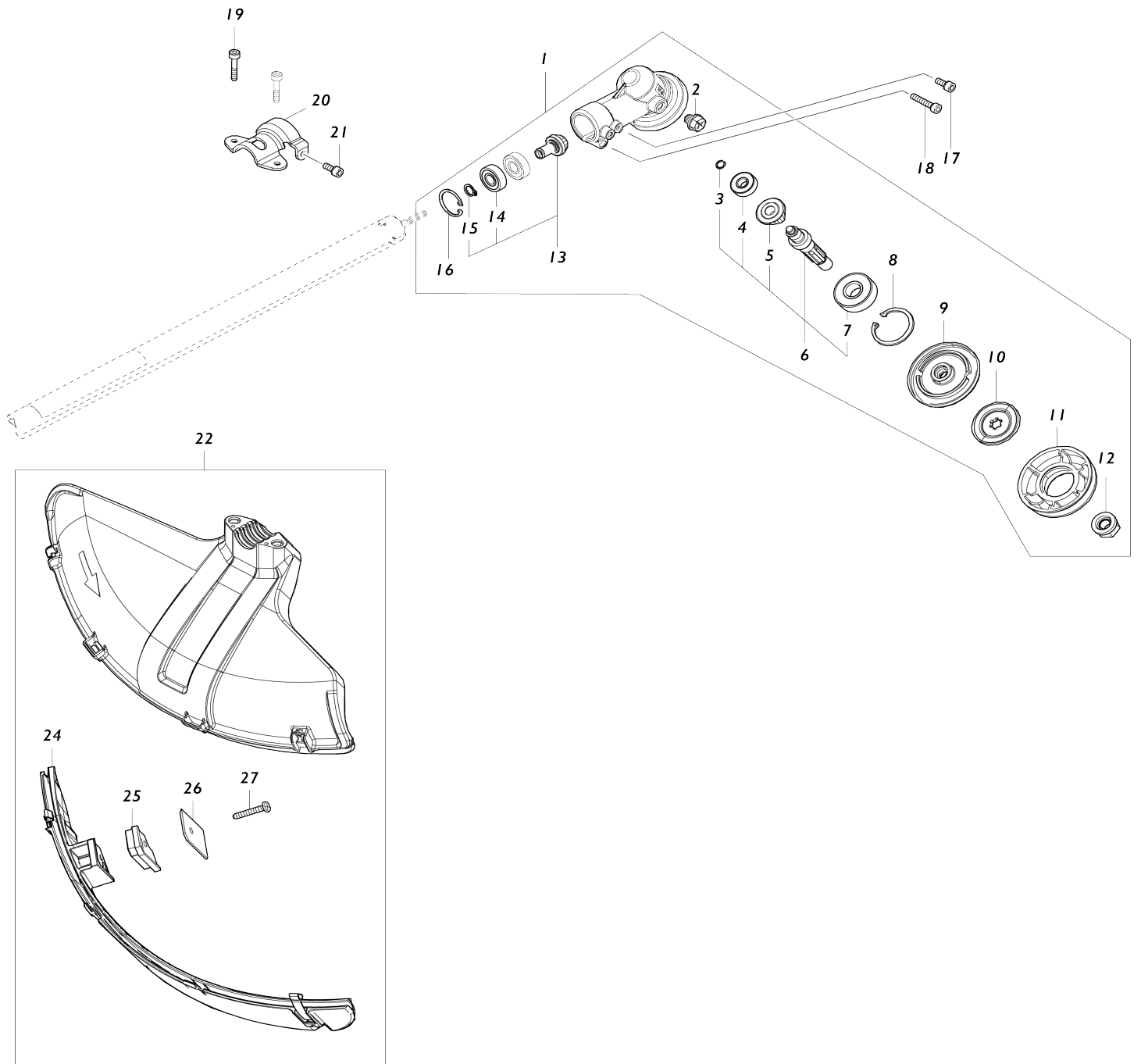
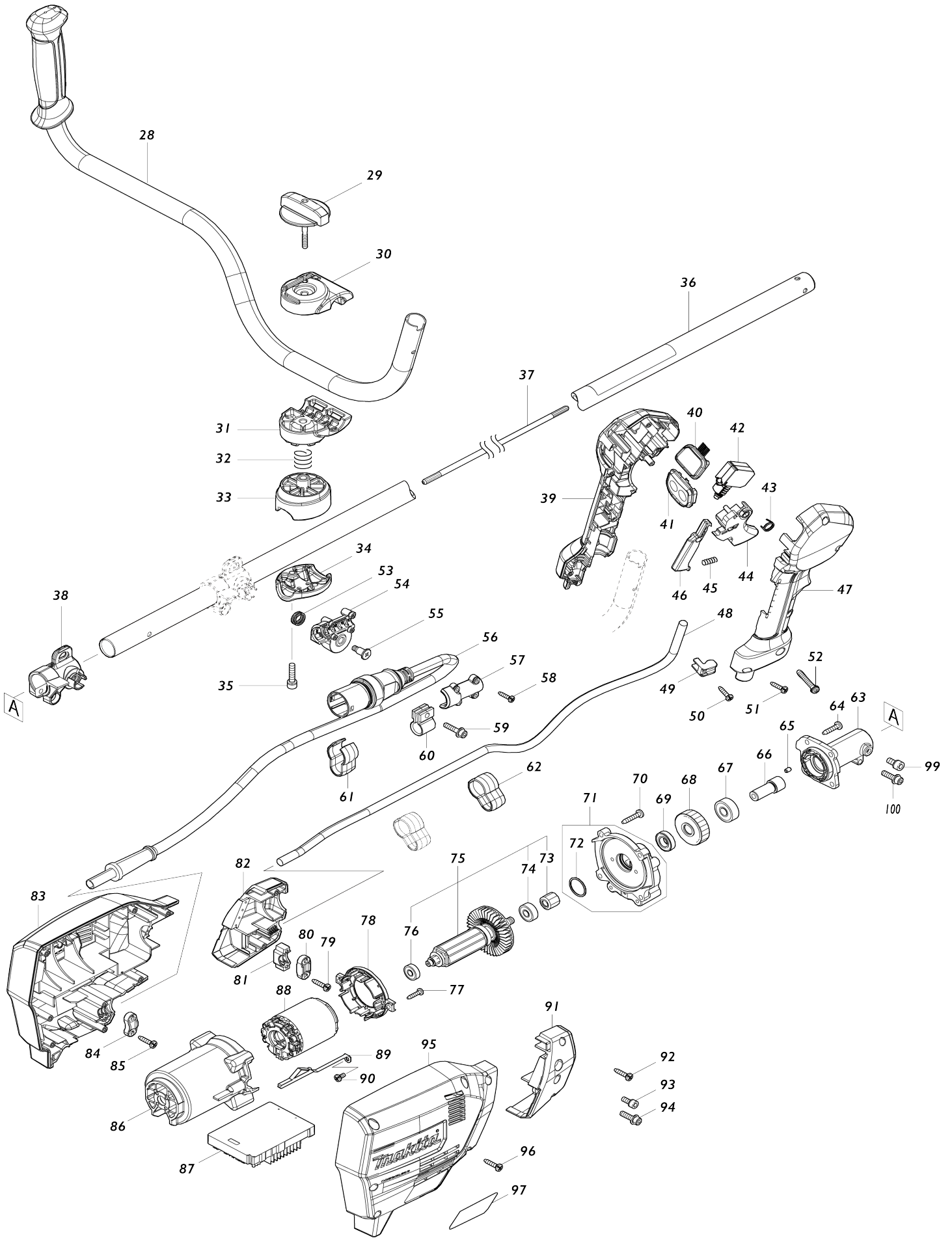


Model No.UR101C BATTERY POWERED GRASS TRIMMER



Model No.UR101C BATTERY POWERED GRASS TRIMMER



Model No.UR101C BATTERY POWERED GRASS TRIMMER

Item No.	Parts No.	Description	Interchangeability	Q'ty	New/Old	Sales Price (USD)	Purchase Price(USD)	Note1	Note2
001	123853-1	GEAR CASE ASSEMBLY		1					
D10		INC. 2,6,8-13,16							
002	265590-2	+HEX.BOLT M8X10 WITH R		1					
003	232350-7	RING SPRING 6		1					
004	210030-5	BALL BEARING 627ZZ		1					
005	221484-1	SPIRAL BEVEL GEAR 19		1					
006	136233-2	CUTTER SHAFT ASS'Y		1					
D10		INC. 3-5,7							
007	211228-7	BALL BEARING 6202DDW		1					
008	257432-4	RETAINING RING R-35		1					
009	144312-2	RECEIVE WASHER COMPLETE		1					
010	347104-0	CLAMP WASHER		1					
011	457274-8	CUP US		1					
012	252236-9	HEX. LOCK NUT M10-17		1					
013	136235-8	SPIRAL BEVEL GEAR ASS'Y		1					
D10		INC. 14,15							
014	210049-4	BALL BEARING 609ZZ		2					
015	257986-1	RETAINING RING (EXT) S-9		1					
016	257987-9	RETAINING RING (INT)R-24		1					
017	922216-6	H.S.H.BOLT M5X14 WITH W		1					
018	922242-5	HEX. SOCKET HEAD BOLT M5X25		1					
019	251513-6	H.S.H.BOLT M5X25		2					
020	347107-4	PROTECTOR CLAMP 24		1					
021	922216-6	H.S.H.BOLT M5X14 WITH W		1					
022	191B54-1	PROTECTOR U 430 SET MG		1					
D10		INC. 24-27							
024	144316-4	PROTECTOR U EXT. 420-450 COMP		1					
C10	346696-6	HOOK		2					
C20	232284-4	LEAF SPRING		2					
025	459765-5	CUTTER EXTENSION		1					
026	347115-5	CUTTER		1					
027	266459-3	TAPPING SCREW 5X25		1					
028	140J61-9	HANDLE 22 COMPLETE		1					
029	168796-0	KNOB 57		1					
030	144313-0	UPPER HANDLE HOLDER COMPLETE		1					
C10	263005-3	RUBBER PIN 6		1					
031	319517-5	LOWER HANDLE HOLDER		1					
032	233309-7	COMPRESSION SPRING 17		1					
033	319959-3	PIPE HOLDER		1					
034	318426-5	PIPE CLAMP		1					
035	922241-7	HEX. SOCKET HEAD BOLT M5X25		2					
036	140S82-5	SHAFT PIPE COMPLETE I		1					
C10	819312-8	MAKITA LOGO LABEL		1					
C20	819J22-7	CAUTION LABEL		1					
037	327056-1	SHAFT		1					
038	412305-0	PIPE HOLDER 24		1					

039	183L60-0	GRIP SET		1				
C10	252180-0	HEX. LOCK NUT M5-8		1				
D10		INC. 47						
040	140K36-4	INDICATION CIRCUIT COMPLETE G		1				
041	140W06-5	SWITCH CIRCUIT COMPLETE G		1				
C10	819J26-9	SWITCH LABEL		1				
042	651436-2	SWITCH C3JW-1A-P-2		1				
043	233540-5	TORSION SPRING 11		1				
044	459145-5	SWITCH LEVER		1				
045	233101-1	COMPRESSION SPRING 4		1				
046	459146-3	LOCK OFF LEVER		1				
047	183L60-0	GRIP SET		1				
C10	252180-0	HEX. LOCK NUT M5-8		1				
D10		INC. 39						
048	699132-4	POWER SUPPLY CORD UNIT		1				
049	687260-7	STRAIN RELIEF		1				
050	266326-2	TAPPING SCREW 4X18		1				
051	266326-2	TAPPING SCREW 4X18		5				
052	911258-5	PAN HEAD SCREW M5X35		1				
053	232589-2	TORSION SPRING 12		1				
054	183N86-4	CONNECTOR HOLDER SET		1				
D10		INC. 57						
055	266511-7	+ FLAT FILLISTER HEAD SCREW M5		1				
056	699146-3	POWER SUPPLY CORD UNIT		1	*			
056-1	699161-7	POWER SUPPLY CORD UNIT	<	1				
057	183N86-4	CONNECTOR HOLDER SET		1				
D10		INC. 54						
058	266429-2	TAPPING SCREW 3X16		4				
059	922244-1	H.S.H.BOLT M5X25 WITH WG		1				
060	412302-6	CORD HOLDER		1				
061	457458-8	CLAMP		1				
062	457458-8	CLAMP		2				
063	319919-5	PIPE BRACKET		1				
064	911233-1	PAN HEAD SCREW M5X20		4				
065	263002-9	RUBBER PIN 4		1				
066	325811-5	SPINDLE HUB		1				
067	211131-2	BALL BEARING 6001DDW		1				
068	226931-7	HELICAL GEAR 29		1				
069	211150-8	BALL BEARING 6901ZZ		1				
070	266459-3	TAPPING SCREW 5X25		4				
071	136231-6	GEAR BOX ASS'Y		1				
D10		INC. 72						
072	213961-7	O RING 22		1				
073	226932-5	HELICAL GEAR 10		1				
074	210005-4	BALL BEARING 608DDW		1				
075	519587-6	ROTOR ASS'Y		1				
D10		INC. 73,74,76						
076	210062-2	BALL BEARING 607ZZ		1				
077	266326-2	TAPPING SCREW 4X18		2				
078	459764-7	BAFFLE PLATE		1				

079	266326-2	TAPPING SCREW 4X18		2				
080	687124-5	STRAIN RELIEF		1				
081	687051-6	STRAIN RELIEF		1				
082	183N25-4	HOUSING COVER SET		1				
D10		INC. 91						
083	183N71-7	HOUSING SET		1				
D10		INC. 95						
084	687149-9	STRAIN RELIEF		1				
085	266326-2	TAPPING SCREW 4X18		2				
086	459763-9	MOTOR HOUSING		1				
087	620C66-8	CONTROLLER		1				
088	629471-8	STATOR		1	*			
088-1	629C13-6	STATOR	S	1				
091	183N25-4	HOUSING COVER SET		1				
D10		INC. 82						
092	266326-2	TAPPING SCREW 4X18		2				
093	922211-6	H.S.H.BOLT M5X12 WITH W		1	*			
093-1	922216-6	H.S.H.BOLT M5X14 WITH W	O	1				
094	922233-6	H.S.H.BOLT M5X20 WITH WR		1				
095	183N71-7	HOUSING SET		1				
D10		INC. 83						
096	266326-2	TAPPING SCREW 4X18		7				
097	856S03-4	UR101C NAME PLATE		1				
099	922211-6	H.S.H.BOLT M5X12 WITH W		1	*			
100	922233-6	H.S.H.BOLT M5X20 WITH WR		1	*			
101	638A31-1	LEAD UNIT	S	1				
102	620L68-8	CONTROLLER B	S	1				
103	652119-7	PAN HEAD SCREW M2X6	S	6				
A01	782238-6	BOX WRENCH 17		1				
A02	783202-0	HEX. WRENCH 4		1				
A03	197243-4	BAND ASSEMBLY SET		1				
A04	831304-7	ACCESSORY BAG		1				
A05	198345-9	CUTTER BLADE 255-2 SET ME		1				
A06	144392-8	TOOL COVER 2T		1				
A09	195246-2	SAFETY GOGGLE		1	*			
F09	197472-9	NYLON CORD 2.0-15M SET		1				
F10	197473-7	NYLON CORD 2.0-30M SET		1				
F11	197474-5	NYLON CORD 2.0-160M SET		1				
F12	197475-3	NYLON CORD 2.0-280M SET		1				
F15	198266-5	TRIMMER HEAD 110-M10L SET M E		1				
F20	198502-9	NYLON CORD 2.4-30M SET		1				
F21	198503-7	NYLON CORD 2.4-120M SET		1				
F22	198504-5	NYLON CORD 2.4-180M SET		1				
F24-1	199450-5	GREASE VESSEL SET	O	1				
F26	199868-0	PLASTIC BLADE 305 SET MG		1				
F27	199870-3	PLASTIC BLADE 305 BLADE SET MG		1				
F45	1915D7-6	TRIMMER HEAD 96-M10L SET		1				
F46	1914R6-0	TRIMMER HEAD ASSEMBLY 98-M 10L		1				
F47	1915D8-4	TRIMMER HEAD 96-M10L SET		1				

F48	1914R8-6	TRIMMER HEAD ASSEMBLY 98-M 10L	1						
-----	----------	-----------------------------------	---	--	--	--	--	--	--

Please state Parts No. when your order.

Print Date 08/28/2024